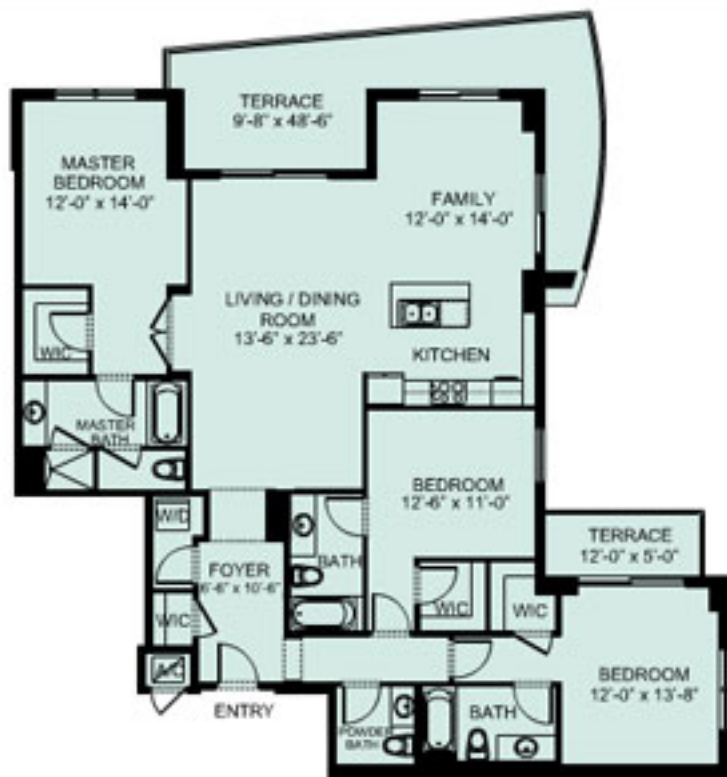


## PENTHOUSE 1

Unit Area: 1890 sq ft 175.58 m<sup>2</sup>

Terrace: 283 sq ft 26.29 m<sup>2</sup>

TOTAL AREA: 2173 sq ft 201.87 m<sup>2</sup>



## PENTHOUSE 2

Unit Area: 1380 sq ft 1282.02 m<sup>2</sup>

Terrace: 260 sq ft 24.15 m<sup>2</sup>

TOTAL AREA: 1640 sq ft 1306.17 m<sup>2</sup>



## PENTHOUSE 3

Unit Area: 1902 sq ft 176.69 m<sup>2</sup>

Terrace: 375 sq ft 34.83 m<sup>2</sup>

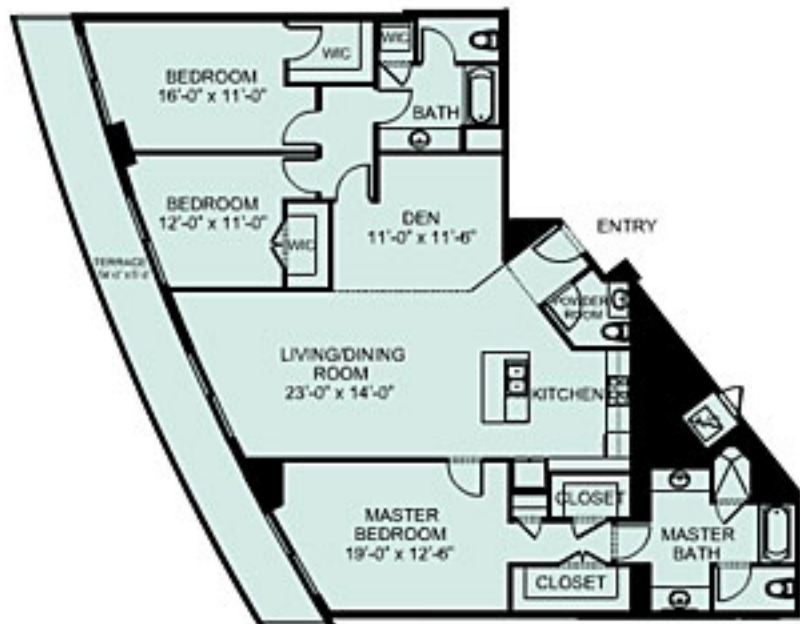
TOTAL AREA: 2277 sq ft 211.52 m<sup>2</sup>



## PENTHOUSE 4

Unit Area: 1936 sq ft 179.85 m<sup>2</sup>  
Terrace: 270 sq ft 25.08 m<sup>2</sup>

TOTAL AREA: 2206 sq ft 204.93 m<sup>2</sup>

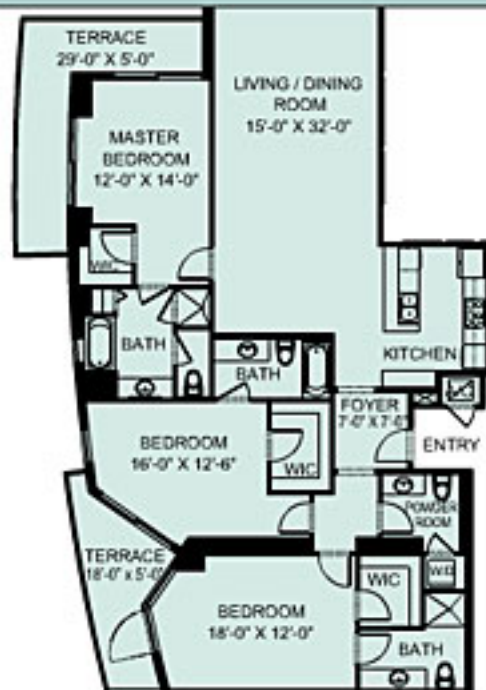


## PENTHOUSE 5

Unit Area: 1970 sq ft 183.01 m<sup>2</sup>

Terrace: 305 sq ft 28.33 m<sup>2</sup>

TOTAL AREA: 2275 sq ft 211.34 m<sup>2</sup>





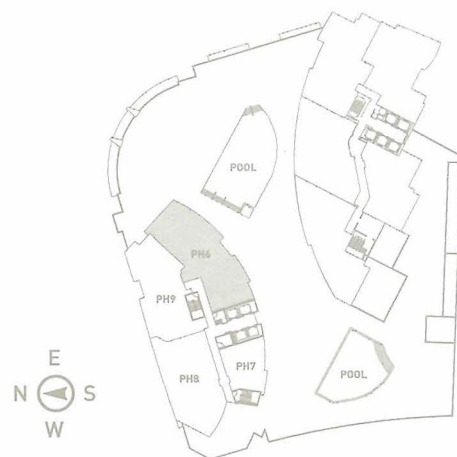
## PENTHOUSE 6

3 BEDROOM • 3.5 BATH • TERRACE

Unit Area: 2255 sq ft 209.49 m<sup>2</sup>

Terrace: 432 sq ft 40.08 m<sup>2</sup>

**TOTAL AREA: 2687 sq ft 249.57 m<sup>2</sup>**



All dimensions are approximate and all floor plans and development plans are subject to change by the developer without notice. Stated dimensions are measured to the exterior boundaries of the exterior walls and the centerline of interior demising walls and in fact vary from the dimensions that would be determined by using the description and definition of the "Unit" set forth in the Declaration (which generally only includes the interior airspace between the perimeter walls and excludes interior structural components).